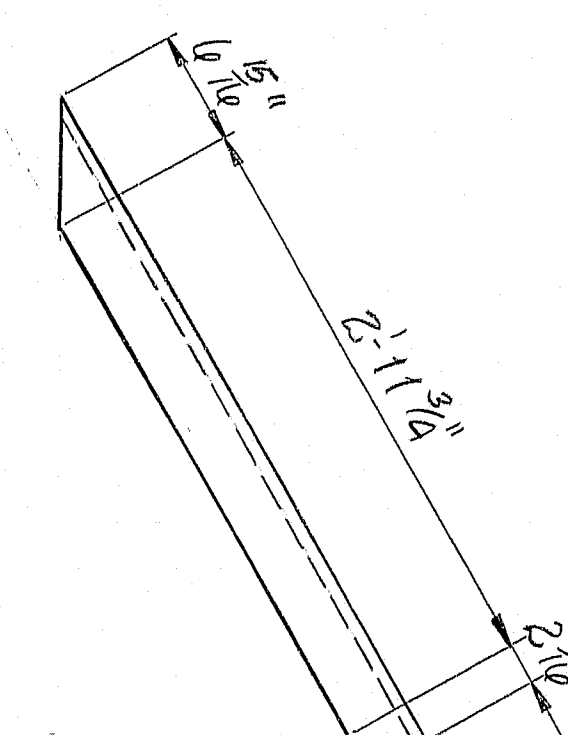
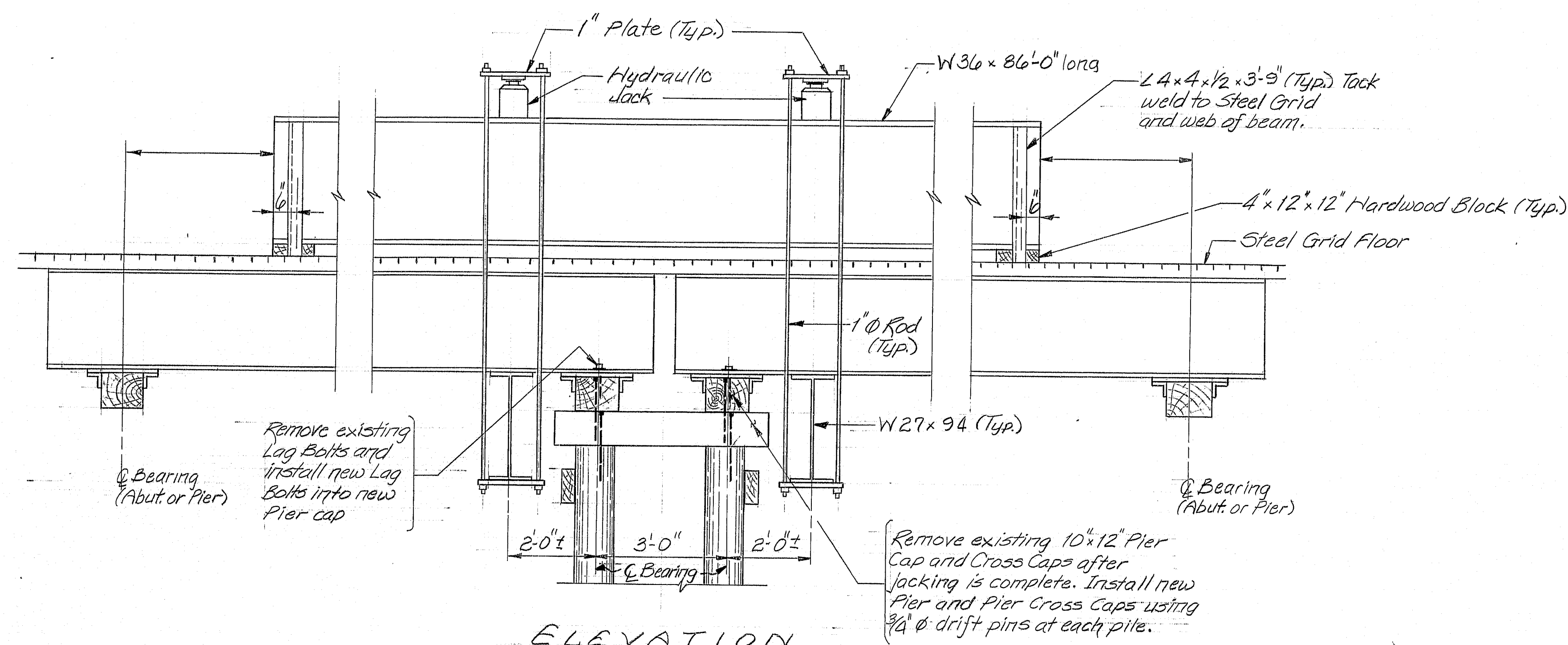
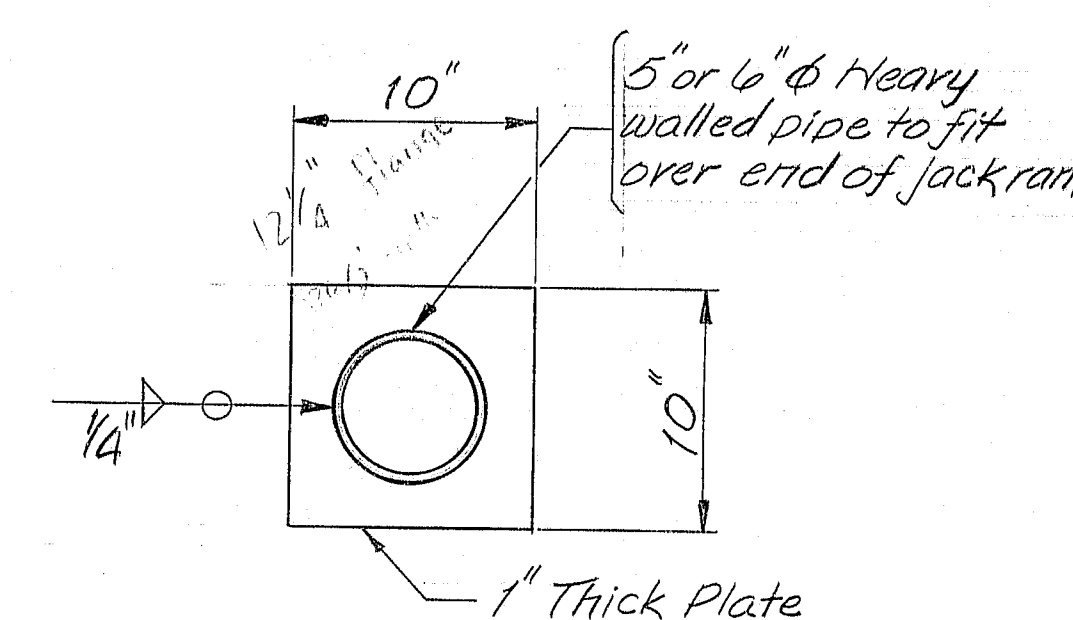


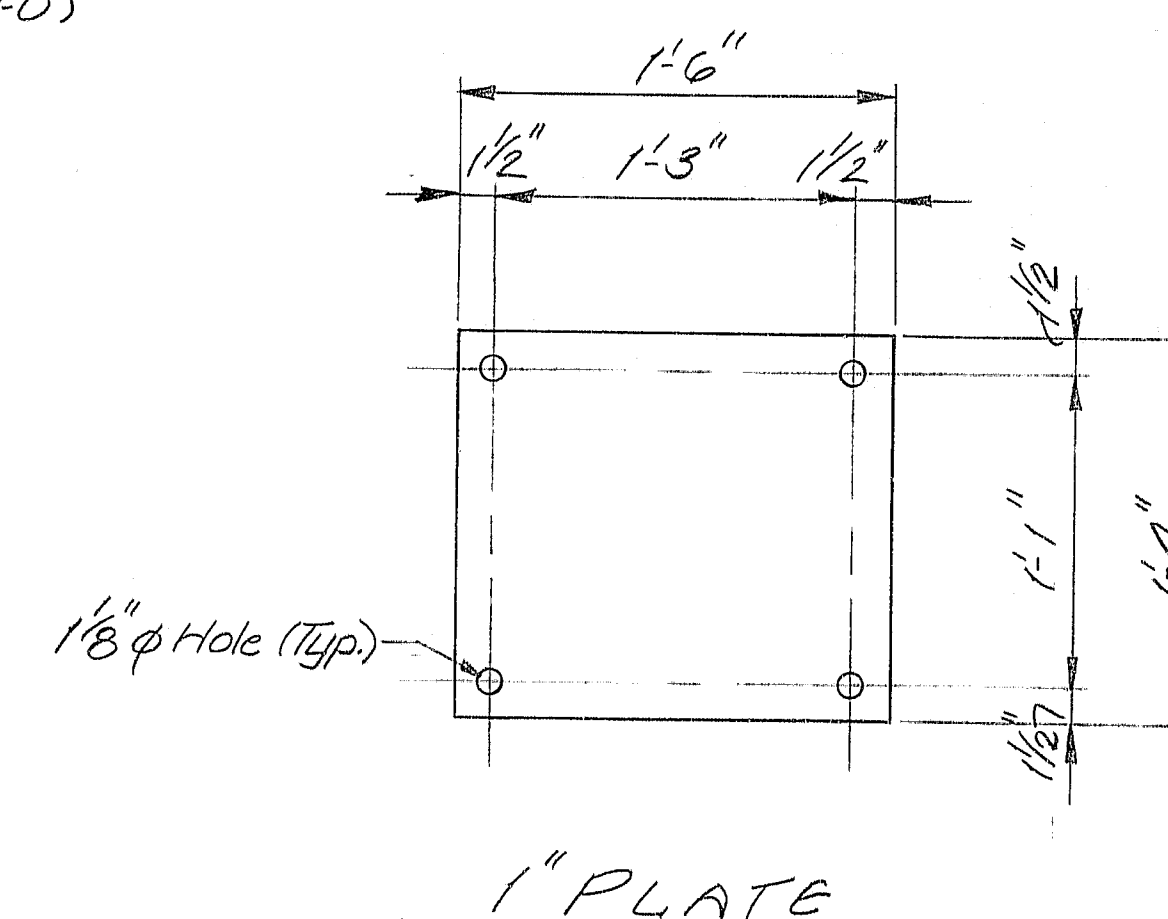
F.B.S.A. REV. NO.	STATE	PROJECT NUMBER	SHEET NO.	TOTAL SHEETS
1	MAINE	2848	1	1



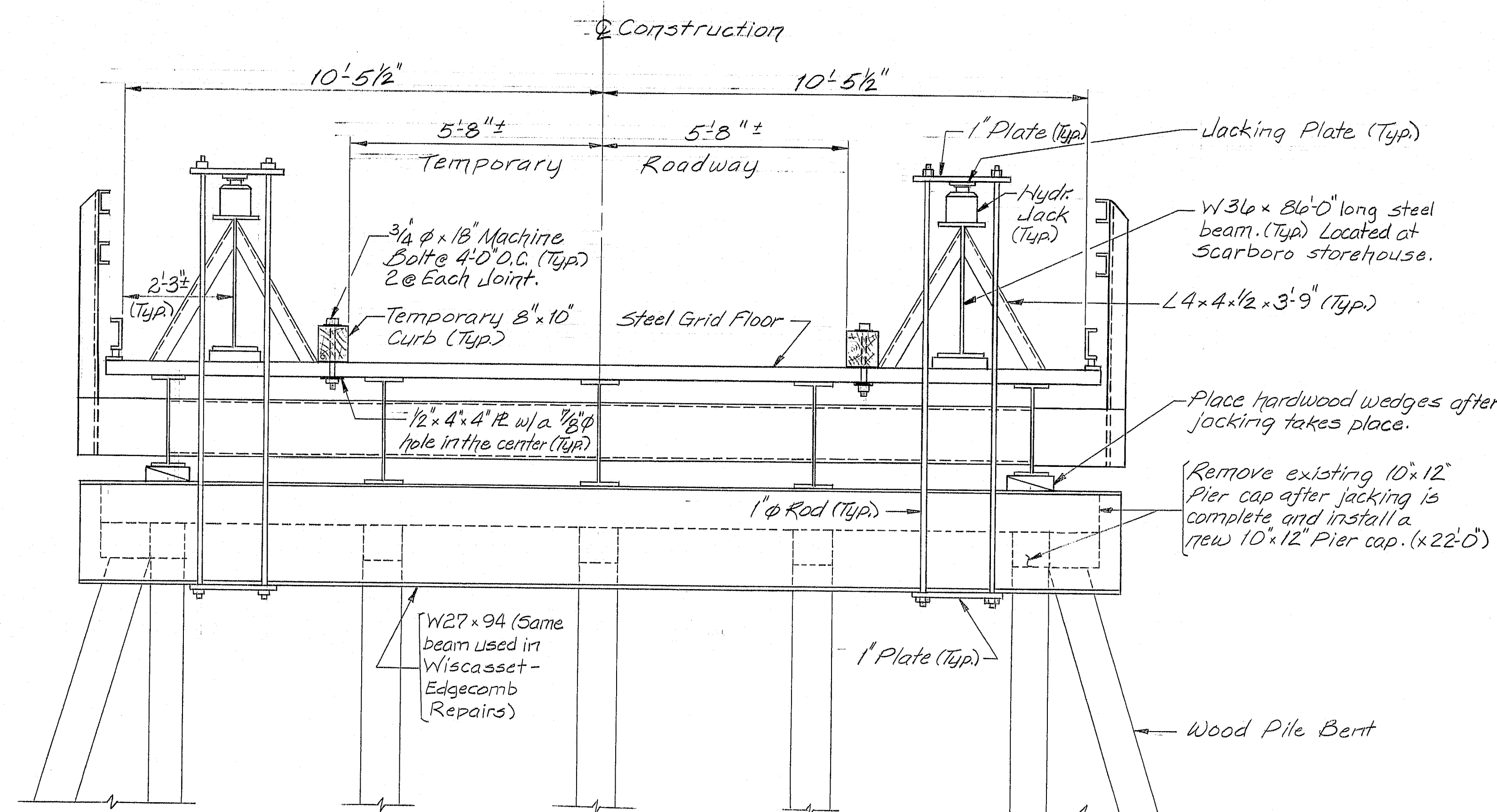
4x4x1/2 x 3'-9"



JACKING PLATE



1" PLATE



TRANSVERSE SECTION

HARDWARE SCHEDULE

DESCRIPTION	NO.	LENGTH	COMMENTS
1" Plate	8	As Shown	
Jacking Plate	4	As Shown	
1" Rod	16	9'-8"	Thread 6" Each End
4x4x1/2	8	3'-9"	
3/4" Machine Bolt	120	18"	Include 1 nut & 1 washer
1/2x4x4" Pl	120	As Shown	
Lag Bolts 1"	60	1'-0"	Include 1 washer
3/4" Drift Pin	72	1'-10"	

TIMBER SCHEDULE

DESCRIPTION	NO.	LENGTH	COMMENTS
9 1/2x12" Pier Cap	4	22'-0"	Dress 12" Sides
9 1/2x12" Pier Cross Cap	21	6'-0"	Dress 12" Sides
8x10" Temporary Curb	25	16'-0"	Leave Rough

Estimated Weight of Steel 1,950 lbs.
Estimated Board Feet 5,050

SCOPE OF WORK

Set jacking beams in place and raise the jack to support the loads on the existing floor beams. Remove pier caps and pier cross caps and install new ones securing them with 3/4" drift pins. Remove jacking beams and move to the next pier. All 3 piers shall be done in this manner.

GENERAL NOTES

1. The temporary curb shall be placed so as to make a smooth transition from the approach roadway to the temporary bridge roadway.

107-91

STATE OF MAINE
DEPARTMENT OF TRANSPORTATION

THOMPSON BRIDGE
OVER
DECKER COVE
IN
SOUTHPORT
LINCOLN COUNTY
GENERAL PLANS

SHEET 1 OF 1 AUGUSTA, MAINE SEPT. 1988

PROJECT DESIGN ENGINEER	DATE
BY	12-88
DESIGN - DETAILED	
CHECKED	
REVISIONS	
FIELD CHANGES	

BRUNING 4412-45701